



Jacqui Sinnott-Lacey
Chief Operating Officer

52 Derby Street
Ormskirk
West Lancashire
L39 2DF

Wednesday, 19 May 2021

TO: COUNCILLORS

Dear Councillor,

Please find additional information for the items indicated for the meeting of the **COUNCIL** being held in the **THE CHAPEL - ORMSKIRK ARTS HOUSE, ST HELENS ROAD, ORMSKIRK L39 4QR** on **WEDNESDAY, 19 MAY 2021** at **7.30 PM**

Yours faithfully

A handwritten signature in black ink, appearing to be "JS", written over a circular scribble.

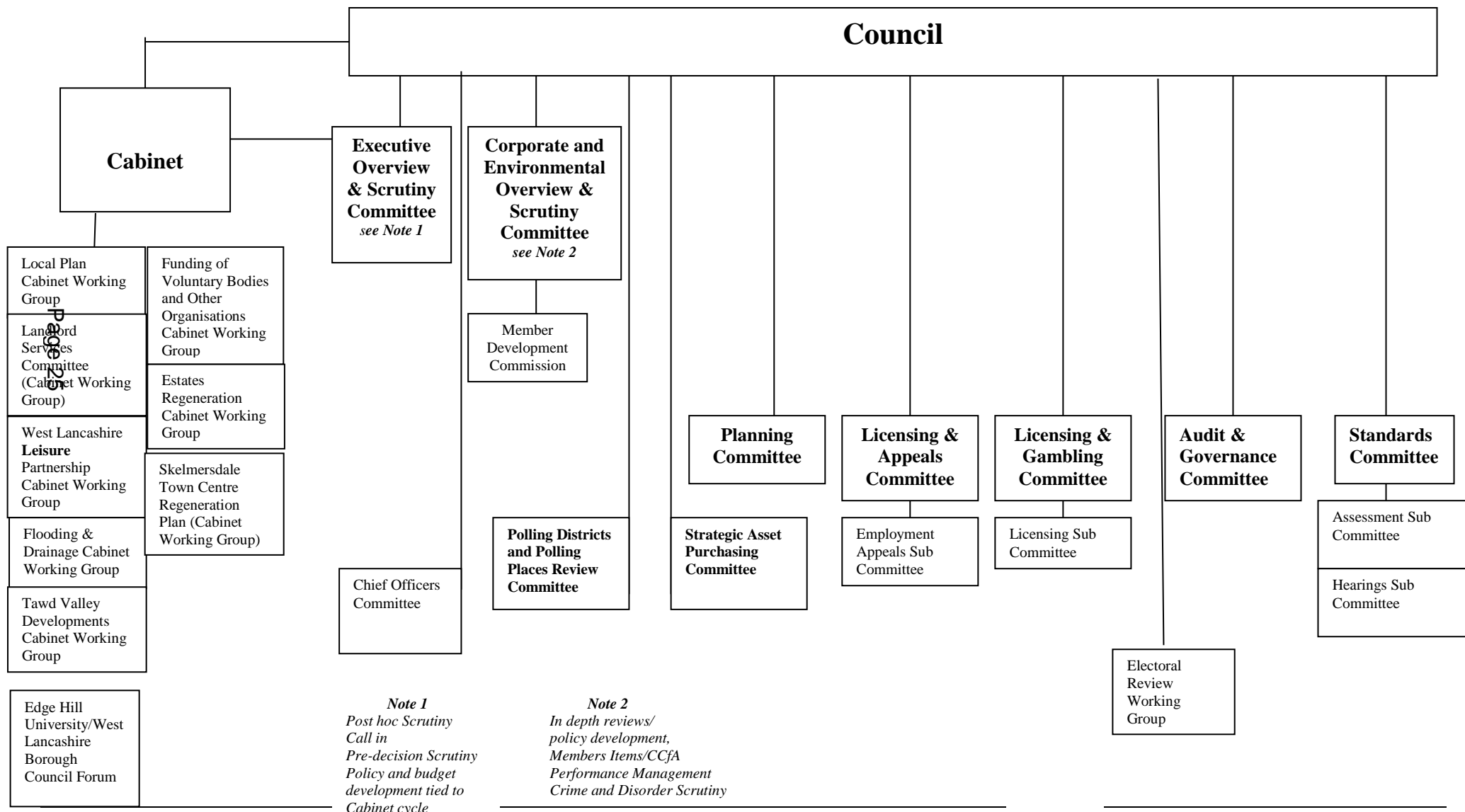
Jacqui Sinnott-Lacey
Chief Operating Officer

AGENDA
(Open to the Public)

- | | | |
|-----------|--|---------|
| 6. | ELECTION OF THE LEADER, THE LEADER'S APPOINTMENT OF THE DEPUTY LEADER AND CABINET, AND 'PROPER OFFICER PROVISIONS AND SCHEMES OF DELEGATION'
Labour proposals. | 25 - 38 |
| 8. | APPOINTMENT OF COMMITTEES ETC 2021/22
Conservative & OWL proposals. | 39 - 40 |
| 9. | APPOINTMENT OF CHAIRMEN AND VICE-CHAIRMEN OF COMMITTEES
Conservative nominations
OWL nominations. | 41 - 44 |

WEST LANCASHIRE BOROUGH COUNCIL – STRUCTURE MAY 2021

REVISED LABOUR APPENDIX



Agenda Item 6

MEMBERSHIP OF CABINET FOR THE MUNICIPAL YEAR 2021/2022**CABINET**

Minimum 3, maximum 10, including the Leader, may not include Mayor or Deputy Mayor - Section 11(7).

Leader	Councillor	I Moran
Deputy Leader	Councillor	Y Gagen
Portfolio Holder (1)	Councillor	V Cummins
Portfolio Holder (2)	Councillor	J Wilkie
Portfolio Holder (3)	Councillor	K Wilkie
Portfolio Holder (4)	Councillor	A Yates
Portfolio Holder (5)	Councillor	D Evans
Portfolio Holder (6)	Councillor	G Dowling

The Leader has appointed the above Cabinet Members with the following Portfolios i.e. Areas of Responsibility

Leader -	Economic Regeneration
Deputy Leader -	Leisure and Human Resources
(1)	Health and Wellbeing
(2)	Housing and Landlord Services
(3)	Street Scene
(4)	Resources and Transformation
(5)	Planning
(6)	Communities and Community Safety

The Leader has appointed the Cabinet Committees and Working Groups set out below.

The Leader has also approved the Scheme of Delegation to Cabinet Members as set out in Constitution 4.3 and the Scheme of Delegation to Chief Officers insofar as they are Cabinet functions as set out in Constitution 4.2.

Leader

Dated **19 May 2021**

MEMBERSHIP OF COMMITTEES, SUB COMMITTEES, PANELS, WORKING GROUPS ETC FOR THE MUNICIPAL YEAR 2021/2022**CABINET WORKING GROUPS****1. LOCAL PLAN CABINET WORKING GROUP**

(7 Members: 4 LAB 2 CON 1 OWL)

Labour **(Chairman) Councillor D Evans**
(Vice Chairman) Councillor V Cummins

Councillors C Coughlan and S Gregson

Conservative:

OWL:

**2. FUNDING OF VOLUNTARY BODIES AND OTHER ORGANISATIONS
CABINET WORKING GROUP**

(5 Members: 5 LAB)

Labour: **(Chairman) Councillor G Dowling**
(Vice Chairman) Councillor Y Gagen

Councillors C Coughlan, S Evans and K Lockie

3. LANDLORD SERVICES COMMITTEE (CABINET WORKING GROUP)

(11 Members: 4 LAB 3 CON 4 Tenants)

Labour: **(Chairman) Councillor J Wilkie**
(Vice Chairman) Councillor N Furey

Councillors: J Finch and S Gregson

Conservative:

Tenants

Representatives: Ms. J. Killey, Ms. L. Mangan, Mr B Povey and
Vacancy

- N.B.** (i) tenant representatives have voting rights
(ii) substitutes are not allowed on the Working Group

4. ESTATES REGENERATION CABINET WORKING GROUP
(6 Members: 4 LAB 2 CON)

Labour: **(Chairman) Councillor I Moran**
(Vice Chairman) Councillor J Wilkie

Councillors S Gregson and K Wilkie

Conservative:

5. WEST LANCASHIRE LEISURE PARTNERSHIP CABINET WORKING GROUP
(8 Members: 4 LAB 2 CON 1 OWL 1 IND)

Labour: **(Chairman) Councillor I Moran**
(Vice-Chairman) Councillor Y Gagen

Councillors V Cummins and A Yates

Conservative:

OWL:

Independent: Councillor J Upjohn

6. FLOODING AND DRAINAGE CABINET WORKING GROUP
(6 Members: 3 LAB 2 CON 1 OWL)

Labour **(Chairman) Councillor A Yates**
(Vice-Chairman) Councillor G Dowling

Councillor D Evans

Conservative:

OWL:

7. COMMUNITY WEALTH BUILDING CABINET WORKING GROUP
(7 Members: 4 LAB 2 CON 1 OWL)

Labour: **(Chairman) Councillor J Finch**
(Vice-Chairman) R Cooper

Councillors S Evans and J Monaghan

Conservative:

OWL:

8. TAWD VALLEY DEVELOPMENTS CABINET WORKING GROUP
(7 Members: 4 LAB 2 CON 1 OWL)

Labour: **(Chairman) Councillor I Moran**
(Vice-Chairman) Councillor A Yates

Councillors D Evans and J Wilkie

Conservative:

OWL:

(Membership to include the Leader, Portfolio Holders for Transformation and Resources and Housing and Landlord Services).

9. SKELMERSDALE TOWN CENTRE REGENERATION PLAN CABINET WORKING GROUP
(7 Members: 4 LAB 2 CON 1 OWL)

Labour: **(Chairman) Councillor I Moran**
(Vice-Chairman) Councillor Y Gagen

Councillors S Gregson and J Wilkie

Conservative:

OWL:

COMMITTEES

1. EXECUTIVE OVERVIEW AND SCRUTINY COMMITTEE
(11 Members: 6 LAB 4 CON 1 OWL Co-optees)

Labour: **(Chairman) Councillor C Coughlan**
 (Vice-Chairman) Councillor N Furey

Councillors T Devine, S Evans, G Owen and P O'Neill

Conservative:

OWL:

The Senior Overview and Scrutiny Chairman is the Chairman of the Executive Overview and Scrutiny Committee

2. CORPORATE AND ENVIRONMENTAL OVERVIEW AND SCRUTINY COMMITTEE

(11 Members: 5 LAB 4 CON 1 OWL 1 IND Co-optees)

Labour: **(Chairman) Councillor D West**
 (Vice-Chairman) Councillor J Finch

Councillors C Dereli , A Fennell and S Gregson

Conservative:

OWL

Independent: J Upjohn

3. PLANNING COMMITTEE

(11 Members: 5 LAB 4 CON 1 OWL 1 IND)

Labour: **(Chairman) Councillor G Owen**
 (Vice-Chairman) Councillor S Evans

Councillors N Delaney, A Fennell and J Finch

Conservative:

OWL:

Independent: J Upjohn

The Portfolio Holder for Planning will not be Chairman, other portfolio holders should not normally be Chairman.

4. LICENSING AND APPEALS COMMITTEE

(11 Members: 6 LAB 4 CON 1 OWL)

Labour: **(Chairman) Councillor T Devine**
(Vice-Chairman) Councillor N Delaney

Councillors T Aldridge, K Lockie, J Monaghan and P O'Neill

Conservative:

OWL:

(Note: Membership must include at least one member of Cabinet, not to be a member of the Investigating Committee – see Sub-Committee requirements.).

5. LICENSING AND GAMBLING COMMITTEE

(15 Members: 7 LAB 6 CON 2 OWL)

Labour **(Chairman) Councillor N Delaney**
(Vice-Chairman) Councillor T Devine

Councillors T Aldridge, K Lockie, P O'Neill and D West

Conservative:

OWL:

6. STANDARDS COMMITTEE

(6 Members: 3 LAB 2 CON 1 OWL)

Chairman: Councillor I Moran (Leader of Labour Group)
Vice Chairman: Councillor D Westley (Leader of Conservative Group)

Labour: Councillors D Evans and Y Gagen

Conservative:

OWL:

Parish Councillor Representatives: Parish Councillor J Stopford
Parish Councillor L Webster
(Note term of office until May 2023)**The Chairman should be the Leader of the largest Group and the Vice Chairman should be the Leader of the second largest Group.**(Note: Independent Persons: Mr Stephen Garvey
(Appointed 17 December 2020)
Mr Mike Fawcett
(Appointed 17 December 2020)**7. INVESTIGATING COMMITTEE**

(5 Members: 2 LAB 2 CON 1 OWL)

Labour: **(Chairman) Councillor J Wilkie**
(Vice-Chairman) Councillor K Wilkie

Conservative:

OWL:

Must include at least one Member of the Cabinet.**8. INDEPENDENT PANEL**Independent Person: Mr. Stephen Garvey
Independent Person: Mr Mike Fawcett
And if advice requires it 2 LAB, 1 CON, 1 OWL Members
Names to be nominated by the Group Leaders to the Legal & Democratic Services Manager

9. CHIEF OFFICERS COMMITTEE

(5 Members: 2 LAB 2 CON 1 OWL)

Labour: **(Chairman) Councillor Y Gagen**
(Vice-Chairman) Councillor I Moran

Conservative:

OWL:

Must include at least one Member of the Cabinet.

10. AUDIT AND GOVERNANCE COMMITTEE

(11 Members: 5 LAB 4 CON 2 OWL)

Labour: **(Chairman) Councillor N Furey**
(Vice-Chairman) P O'Neill

Councillors C Dereli, A Fennell and N Pryce-Roberts

Conservative:

OWL:

CIPFA Guidance - Chairman should not be a member of the Cabinet

11. CCTV IMAGES COMMITTEE

(8 Members: 4 LAB 3 CON 1 OWL)

Labour: **(Chairman) Councillor N Pryce-Roberts**
(Vice-Chairman) Councillor K Wilkie

Councillors: S Evans and D West

Conservative:

OWL:

12. POLLING DISTRICTS AND POLLING PLACES REVIEW COMMITTEE

(6 Members: 3 LAB 2 CON 1 OWL)

Labour: **(Chairman) Councillor D Evans**
 (Vice-Chairman) Councillor G Dowling

Conservative:

OWL:

13. STRATEGIC ASSET PURCHASING COMMITTEE

(6 Members: 3 LAB 2 CON 1 OWL)

Labour: **(Chairman) Councillor I Moran**
 (Vice-Chairman) Councillor D Evans

Councillor A Yates

Conservative:

OWL:

LICENSING AND APPEALS COMMITTEE – SUB-COMMITTEE
--

1. EMPLOYMENT APPEALS SUB-COMMITTEE

The Sub-Committee to consist of 3 members, the membership to be determined by the Legal & Democratic Services Manager, in consultation with the Chairman of the Licensing and Appeals Committee.

(Note: For Chief Officers and Officers on JNC conditions, JNC guidance requires that Membership must include at least one member of Cabinet, not to be a member of the Investigating Committee).

**LICENSING AND GAMBLING COMMITTEE –
SUB COMMITTEE****1. LICENSING SUB COMMITTEE**

The Sub-Committee to consist of 3 members, the membership to be determined by the Legal & Democratic Services Manager, in consultation with the Chairman of the Licensing and Gambling Committee.

Either the Chairman, Vice Chairman or Opposition Spokesperson of the Licensing and Gambling Committee to act as Chairman.

STANDARDS COMMITTEE – SUB COMMITTEES**1. ASSESSMENT SUB-COMMITTEE**

The Sub-Committee to consist of 3 Members, selected by the Legal & Democratic Services Manager, in consultation with the Chairman of the Standards Committee.

2. HEARINGS SUB-COMMITTEE

The Sub-Committee to consist of a maximum of 5 Members selected by the Legal & Democratic Services Manager, in consultation with the Chairman of the Standards Committee.

3. RECRUITMENT OF INDEPENDENT MEMBERS PANEL

The Panel to consist of 3 Members selected by the Legal & Democratic Services Manager in consultation with the Chairman of the Standards Committee.

WORKING GROUP OF COUNCIL**1. ELECTORAL REIVEW WORKING GROUP**

(6 Members - 3 Lab 2 Con 1 OWL)

Labour: **(Chairman) Councillor I Moran**
(Vice-Chairman) Councillor G Dowling

Conservative:

OWL:

JOINT COMMITTEES

- 1. POLICE AND CRIME PANEL**
(18 Elected Members (1 from West Lancashire) plus 2 independent co-opted members)

Councillor G Dowling

See Constitution 4.1 Appendices 3A – 3C .

OVERVIEW AND SCRUTINY COMMISSIONS AND WORKING GROUPS

- 1. MEMBER DEVELOPMENT COMMISSION**
(7 Members 4 Lab 2 Con 1 OWL)

Labour: **(Chairman) Councillor C Dereli**
(Vice-Chairman) Councillor G Dowling

Councillors: Y Gagen and I Moran

Conservative:

OWL:

Additional Member/
Co-optees: To be appointed by the Commission/Committee if
required

LIAISON GROUPS**PLACE-SHAPING HUB**

Lancashire County Council
Chair of Skelmersdale Place Board
Chief Operating Officer
Leader of Council
Corporate Director of Place and Community

Once proposals are being considered the following partners will be engaged as appropriate:

London & Cambridge Properties (owners of the Concourse Centre)
Homes England
West Lancashire College
Lancashire Local Economic Partnership
Tawd Valley Developments
Business Representative of Skelmersdale Place Board

FORUMS**1. EDGE HILL UNIVERSITY/WEST LANCASHIRE BOROUGH COUNCIL FORUM**

10 Forum Members – 4 Borough Councillors (3 LAB, 1 CON), 4 Board University Members, Chief Operating Officer (or her nominee), Vice-Chancellor (or his nominee)

Councillors G Dowling, I Moran and A Yates

The Member of Parliament for West Lancashire and the President of the Students Union will be invited to attend meetings of the Forum.

2. HACKNEY CARRIAGE AND PRIVATE HIRE FORUM

Membership – please refer to paragraphs 1 and 2 of the Forum's Constitution attached at 4.1 Appendix 2.

**WEST LANCASHIRE ARMED FORCES COMMUNITY COVENANT
WORKING GROUP**

(2 Members)

Labour: Councillor T Devine

Substitute: Councillor I Moran

Conservative: Councillor

Substitute: Councillor

Partners

Jobcentre Plus, North & West Lancashire Chamber of Commerce, NHS West Lancashire Clinical Commissioning Group, West Lancashire Community Leisure, Council for Voluntary Service, One West Lancashire Board, Lancashire West CAB, Parish Councils), Army, British Legion, Soldiers', Sailors' and Airmen's Families Association, Veterans Council, West Lancashire College, Edge Hill University, Help Direct Lancs

**INDEPENDENT REMUNERATION PANEL /
PARISH INDEPENDENT REMUNERATION PANEL**

Mrs G Stanley: until May 2024 (Chairman)

Mr J Boardman: until May 2023

Mr I Thompson: until May 2022

CHAMPIONS

Armed Forces: Councillor T Aldridge

Older People: Councillor N Delaney

Role Descriptions – Constitution 3.2 Article 2

APPOINTMENT OF COMMITTEES 2021/22

Proposals from Conservative & Owls

- A. That, for the period ending with the next Annual Meeting of the Council, or such lesser period should the political balance or allocation to political groups change during the year requiring a review under the provisions of the Local Government and Housing Act 1989, the Committees, Sub-Committees etc be appointed as detailed in the revised Labour Appendix circulated prior to the meeting and that the allocation of seats to the political groups be as indicated, with the following changes:
- (i) Executive Overview & Scrutiny Committee (11 Members: 5 LAB 4 CON 2 OWL)
 - (ii) Planning Committee (14 Members: 6 LAB 5 CON 2 OWL 1 IND)
 - (iii) Licensing & Appeals Committee (12 Members: 6 LAB 5 CON 1 OWL)
 - (iv) Licensing & Gambling Committee (10 Members: 5 LAB 4 CON 1 OWL)
 - (v) Investigating Committee (6 Members: 3 LAB, 2 CON 1 OWL)
 - (vi) Chief Officers Committee (6 Members: 3 LAB 2 CON 1 OWL)
 - (vii) Audit & Governance Committee (10 Members: 5 LAB 4 CON 1 OWL)
 - (viii) Edge Hill University/West Lancashire Borough Council Forum (2 LAB, 1 CON, 1 OWL)
- B. That in accordance with the wishes of the group, the group Leaders submit names in relation to appointment to Committees etc and the appointment of the Independent Persons & the 2 Parish Council Representatives on the Standards Committee, be as detailed in the appendix be approved.
- C. That the terms of reference for the Committees etc now appointed be agreed as set out in the Constitution.
- D. That it be noted that the Leader has appointed Cabinet Working Groups as indicated on the revised Appendix to the report, with the terms of reference included in the Constitution.

Agenda Item 9

APPOINTMENT OF CHAIRMEN AND VICE-CHAIRMEN OF COMMITTEES

Nominations to be moved by Councillor David Westley

Corporate & Environment Overview & Scrutiny Vice-Chairman – Cllr James Upjohn

Planning Committee Chairman – Cllr David O'Toole

Audit & Governance Committee Chairman – Cllr Eddie Pope

Licensing & Appeals Committee Vice-Chairman – Cllr John Mee

Licensing & Gambling Committee Vice-Chairman – Cllr John Mee

Investigating Committee Vice-Chairman – Councillor John Gordon

CCTV Committee Vice-Chairman – Councillor John Gordon

Polling Districts & Polling Places Committee Vice-Chairman – Cllr David Whittington

APPOINTMENT OF CHAIRMEN AND VICE-CHAIRMEN OF COMMITTEES

Nominations to be moved by Councillor Adrian Owens

Executive Overview & Scrutiny Chairman – Cllr Adrian Owens

Chief Officers Committee Vice-Chairman – Councillor Ian Davis

Strategic Asset Purchasing Committee Chairman – Cllr Ian Rigby

