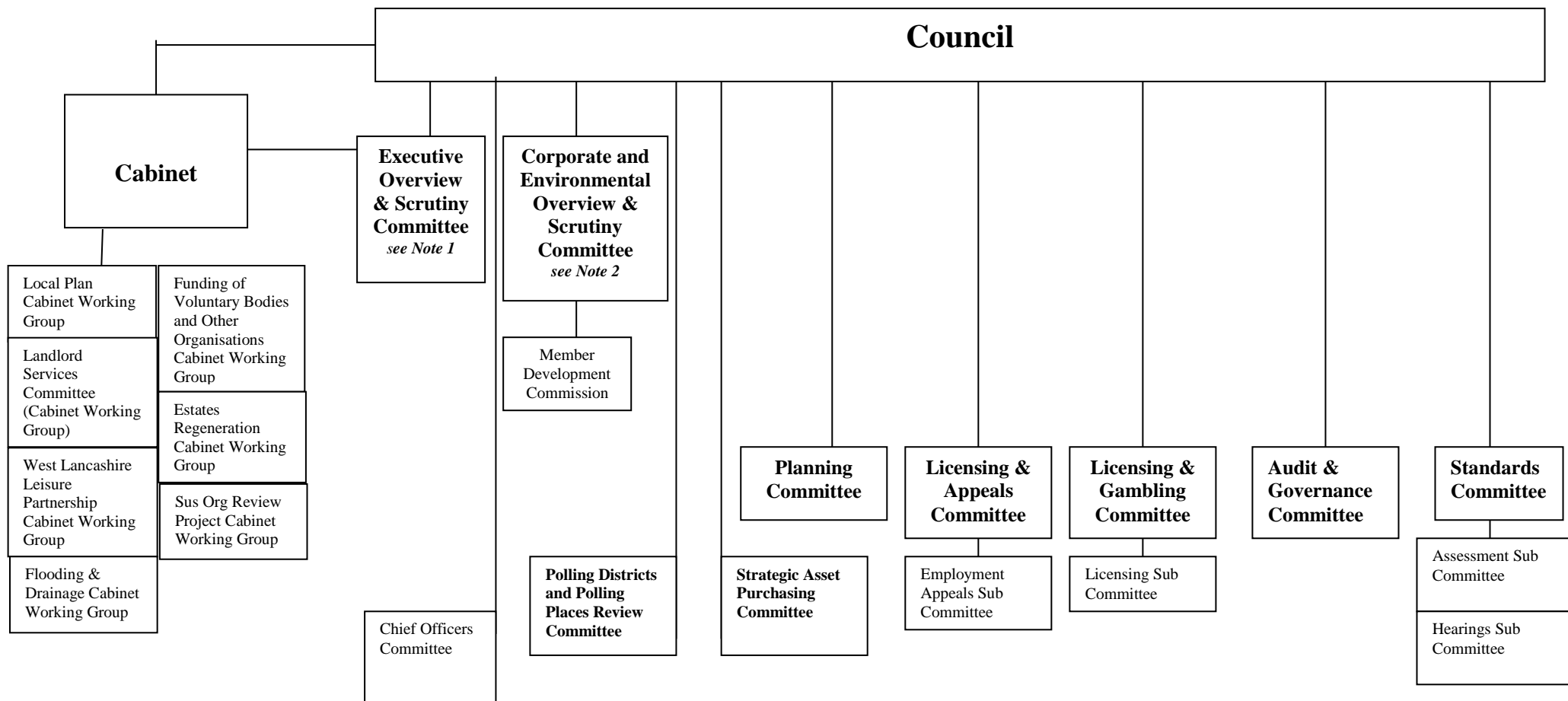


WEST LANCASHIRE BOROUGH COUNCIL – STRUCTURE MAY 2019

APPENDIX 1



Edge Hill University/West Lancashire Borough Council Forum

Note 1
Post hoc Scrutiny
Call in
Pre-decision Scrutiny
Policy and budget development tied to Cabinet cycle

Note 2
In depth reviews/ policy development,
Members Items/CCfA
Performance Management
Crime and Disorder Scrutiny

APPENDIX 1

**Appendix to Section 4.1
MEMBERSHIP OF CABINET FOR THE MUNICIPAL YEAR 2019/2020**



Minimum 3, maximum 10, including the Leader, may not include Mayor or Deputy Mayor - Section 11(7).

- | | |
|-----------------------------|-----------------------------|
| Leader | Councillor I Moran |
| Deputy Leader | Councillor Y Gagen |
| Portfolio Holder (1) | Councillor K Wright |
| Portfolio Holder (2) | Councillor J Forshaw |
| Portfolio Holder (3) | Councillor K Wilkie |
| Portfolio Holder (4) | Councillor A Yates |
| Portfolio Holder (5) | Councillor D Evans |

The Leader has appointed the above Cabinet Members with the following Portfolios i.e. Areas of Responsibility

- | | |
|------------------------|--------------------------------------|
| Leader - | Economic Regeneration |
| Deputy Leader - | Leisure and Human Resources |
| (1) | Health and Community Safety |
| (2) | Housing and Landlord Services |
| (3) | Street Scene |
| (4) | Resources and Transformation |
| (5) | Planning |

The Leader has appointed the Cabinet Committees and Working Groups set out below.

The Leader has also approved the Scheme of Delegation to Cabinet Members as set out in Constitution 4.3 and the Scheme of Delegation to Chief Officers insofar as they are Cabinet functions as set out in Constitution 4.2 to 4.2F.

Leader

Dated **15 May 2019**

MEMBERSHIP OF COMMITTEES, SUB COMMITTEES, PANELS, WORKING GROUPS ETC FOR THE MUNICIPAL YEAR 2019/2020**CABINET WORKING GROUPS****1. LOCAL PLAN CABINET WORKING GROUP**

(8 Members - 5 Lab 3 Con)

Labour: **(Chairman) Councillor D Evans**
(Vice Chairman) Councillor A Yates

Councillors C Cooper, C Dereli and G Dowling

Conservative: Councillors

2. FUNDING OF VOLUNTARY BODIES AND OTHER ORGANISATIONS CABINET WORKING GROUP

(5 Labour Members)

Labour: **(Chairman) Councillor C Cooper**
(Vice Chairman) Councillor Y Gagen

Councillors G Dowling, S Evans and K Lockie

3. LANDLORD SERVICES COMMITTEE (CABINET WORKING GROUP)

(11 Members – 4 Lab, 3 Con, 4 Tenants)

Labour: **(Chairman) Councillor J Forshaw**
(Vice Chairman) Councillor N Furey

Councillors C Coughlin and M Nixon

Conservative: Councillors

Tenants

Representatives: Ms. J. Killey, Ms. L. Mangan, Mr B Povey and
Ms. H. Scully

- N.B.** (i) tenant representatives have voting rights
(ii) substitutes are not allowed on the Working Group

4. ESTATES REGENERATION CABINET WORKING GROUP
(6 Members – 4 Lab 2 Con)

Labour: **(Chairman) Councillor I Moran**
(Vice Chairman) Councillor J Forshaw

Councillors C Cooper and K Wilkie

Conservative: Councillors

5. WEST LANCASHIRE LEISURE PARTNERSHIP CABINET WORKING GROUP
(6 Members - 4 Lab 2 Con)

Labour: Councillor I Moran (Leader)
Councillor Y Gagen (Deputy Leader/Portfolio Holder
for Leisure & Human Resources)
Councillor K Wright (Portfolio Holder for Health &
Community Safety)
Councillor A Yates (Portfolio Holder for Resources
and Transformation)

Conservative: Councillor D Westley (Opposition Leader)
Councillor

6. SUSTAINABLE ORGANISATION REVIEW PROJECT CABINET WORKING GROUP
(7 Members – 4 Labour, 3 Conservative)

Labour: **(Chairman) Councillor A Yates**
(Vice-Chairman) Councillor J Forshaw
Councillors D Evans and Y Gagen

Conservative: Councillors

7. FLOODING AND DRAINAGE CABINET WORKING GROUP
(5 Members – 3 Labour, 2 Conservative)

Labour: **(Chairman) Councillor A Yates**
(Vice-Chairman) Councillor A Pritchard

Councillor D Evans

Conservative: Councillors

COMMITTEES**1. EXECUTIVE OVERVIEW AND SCRUTINY COMMITTEE**
(13 Members – 7 Lab 5 Con 1 OWL Co-optees)

Labour: **(Chairman) Councillor D West**
(Vice-Chairman) Councillor N Furey
Councillors T Aldridge, R Cooper, K Lockie, M Mills
and M Nixon

Conservative: Councillors.

Our West Lancashire: Councillor A Owens

Co-optees;

The Senior Overview and Scrutiny Chairman is the Chairman of the Executive Overview and Scrutiny Committee

2. CORPORATE AND ENVIRONMENTAL OVERVIEW AND SCRUTINY COMMITTEE
(13 Members - 7 Lab 5 Con 1 OWL Co-optees)

Labour: **(Chairman) Councillor V Cummins**
(Vice-Chairman) Councillor J Finch
Councillors C Cooper, C Coughlin, G Dowling, G
Hodson and J Monaghan

Conservative: Councillors

Our West Lancashire: Councillor K Mitchell

Co-optees:

3. PLANNING COMMITTEE

(18 Members - 10 Lab 7 Con 1 OWL)

Labour:

(Chairman) Councillor G Dowling**(Vice-Chairman) Councillor A Pritchard**

Councillors R Cooper, C Coughlin, V Cummins, N Delaney, C Dereli, T Devine, S Evans and J Finch

Conservative:

Councillors

Our West Lancashire:

Councillor J Thompson

The Portfolio Holder for Planning will not be Chairman, other portfolio holders should not normally be Chairman.

4. LICENSING AND APPEALS COMMITTEE

(11 Members - 6 Lab 4 Con 1 OWL)

Labour:

(Chairman) Councillor T Devine**(Vice-Chairman) Councillor N Delaney**

Councillors G Hodson, M Mills, J Monaghan and P O'Neill

Conservative:

Councillors

Our West Lancashire

Councillor G Johnson

5. LICENSING AND GAMBLING COMMITTEE

(15 Members - 8 Lab 5 Con 2 OWL)

Labour:

(Chairman) Councillor N Delaney**Vice-Chairman) Councillor T Devine**

Councillors S Evans, G Hodson, K Lockie, M Mills, P O'Neill and D West

Conservative:

Councillors

Our West Lancashire:

Councillors G Johnson and A Owens

6. STANDARDS COMMITTEE

(8 Members - 3 Lab 2 Con 1 OWL 2 Parish Councillors)

Chairman: Councillor I Moran
Vice Chairman: Councillor D Westley

Labour: Councillors D Evans and K Wright

Conservative: Councillor

Our West Lancashire: Councillor I Davis

Parish Councillor Parish Councillor
Representatives Parish Councillor
(with the right to vote):

The Chairman should be the Leader of the Council and the Vice Chairman should be the Leader of the Main Opposition Group.

(Note: Independent Person: Mr Stuart Ibbs (Appointed 1 July 2012)
Reserve Independent Person: Mr Stephen Garvey (Appointed 1 July 2012)

7. INVESTIGATING COMMITTEE

(5 Members - 3 Lab 1 Con 1 OWL)

Labour: **(Chairman) Councillor J Forshaw**
(Vice-Chairman) Councillor K Wilkie
Councillor N Pryce-Roberts

Conservative: Councillors

Our West Lancashire: Councillor I Davis

Must include at least one Member of the Cabinet.

8. INDEPENDENT PANEL

Independent Person: Mr. Stuart Ibbs
Independent Person: Mr. Stephen Garvey
And if advice requires it 5 Members – 3 Lab 2 Con
Names to be nominated by the Group Leaders to the Borough Solicitor

9. CHIEF OFFICERS COMMITTEE

(5 Members - 3 Lab 1 Con 1 OWL)

Labour: **(Chairman) Councillor Y Gagen**
(Vice-Chairman) Councillor I Moran
Councillor K Wright

Conservative: Councillors

Our West Lancashire: Councillor A Owens

Must include at least one Member of the Cabinet.

10. AUDIT AND GOVERNANCE COMMITTEE

(11 Members - 6 Lab 4 Con 1 OWL)

Labour: **(Chairman) Councillor C Cooper**
(Vice-Chairman) N Pryce-Roberts
Councillors C Dereli, M Nixon, P O'Neill and A Pritchard

Conservative: Councillors

Our West Lancashire: Councillor I Rigby

CIPFA Guidance - Chairman should not be a member of the Cabinet

11. CCTV IMAGES COMMITTEE

(5 Members - 2 Lab 2 Con 1 OWL)

Labour: **(Chairman) Councillor N Pryce-Roberts**
(Vice-Chairman) Councillor K Wilkie

Conservative: Councillors

Our West Lancashire: Councillor J Thompson

12. POLLING DISTRICTS AND POLLING PLACES REVIEW COMMITTEE
(6 Members - 3 Lab 2 Con 1 OWL)

Labour: **(Chairman) Councillor D Evans**
(Vice-Chairman) Councillor G Owen
Councillor G Dowling

Conservative: Councillors

Our West Lancashire: Councillor: A Owens

13. STRATEGIC ASSET PURCHASING COMMITTEE
(6 Members - 3 Lab 2 Con 1 OWL)

Labour: **(Chairman) Councillor I Moran**
(Vice-Chairman) Councillor D Evans
Councillor A Yates

Conservative: Councillors

Our West Lancashire: Councillor I Rigby

**LICENSING AND APPEALS COMMITTEE –
SUB-COMMITTEE****1. EMPLOYMENT APPEALS SUB-COMMITTEE**

The Sub-Committee to consist of 3 members, the membership to be determined by the Borough Solicitor, in consultation with the Chairman of the Licensing and Appeals Committee.

**LICENSING AND GAMBLING COMMITTEE –
SUB COMMITTEE****1. LICENSING SUB COMMITTEE**

The Sub-Committee to consist of 3 members, the membership to be determined by the Borough Solicitor, in consultation with the Chairman of the Licensing and Gambling Committee.

Either the Chairman, Vice Chairman or Opposition Spokesperson of the Licensing and Gambling Committee to act as Chairman.

STANDARDS COMMITTEE – SUB COMMITTEES**1. ASSESSMENT SUB-COMMITTEE**

The Sub-Committee to consist of 3 Members, selected by the Borough Solicitor, in consultation with the Chairman of the Standards Committee.

2. HEARINGS SUB-COMMITTEE

The Sub-Committee to consist of a maximum of 5 Members selected by the Borough Solicitor, in consultation with the Chairman of the Standards Committee.

3. RECRUITMENT OF INDEPENDENT MEMBERS PANEL

The Panel to consist of 3 Members selected by the Borough Solicitor in consultation with the Chairman of the Standards Committee.

JOINT COMMITTEES**1. POLICE AND CRIME PANEL**

(18 Elected Members (1 from West Lancashire) plus 2 independent co-opted members)

Councillor K Wright

See Constitution 4.1 Appendices 3A – 3C .

OVERVIEW AND SCRUTINY COMMISSIONS AND WORKING GROUPS**1. MEMBER DEVELOPMENT COMMISSION**

(6 Members)

Labour: **(Chairman) Councillor C Dereli**
(Vice-Chairman) Councillor G Dowling
Councillor Y Gagen and I Moran

Conservative: Councillors

Additional Member/
Co-optees: To be appointed by the Commission/Committee if
required

LIAISON GROUPS**1. SKELMERSDALE TOWN CENTRE BOROUGH/COUNTY LIAISON GROUP**

(6 Borough Members - 4 Lab 2 Con and 2 County Council Members)

Labour: **(Chairman) Councillor D Evans**
(Vice Chairman) Councillor I Moran

Councillors C Cooper and N Furey

Conservative: Councillor

County Councillors: County Councillor D O'Toole and E Pope
(2 County Council Appointments)

FORUMS**1. EDGE HILL UNIVERSITY/WEST LANCASHIRE BOROUGH COUNCIL FORUM**

10 Forum Members – 4 Borough Councillors (3 Lab 1 Con), 4 Board University Members, Chief Executive (or her nominee), Vice-Chancellor (or his nominee)

Labour: Councillors G Dowling, I Moran and A Yates

Conservative: Councillor

The Member of Parliament for West Lancashire and the President of the Students Union will be invited to attend meetings of the Forum.

2. HACKNEY CARRIAGE AND PRIVATE HIRE FORUM

Membership – please refer to paragraphs 1 and 2 of the Forum's Constitution attached at 4.1 Appendix 2.

WEST LANCASHIRE ARMED FORCES COMMUNITY COVENANT WORKING GROUP

(2 Members)

Labour: Councillor T Devine

Substitute: Councillor I Moran

Conservative: Councillor

Substitute: Councillor

Partners

Jobcentre Plus, North & West Lancashire Chamber of Commerce, NHS West Lancashire Clinical Commissioning Group, West Lancashire Community Leisure, Council for Voluntary Service, One West Lancashire Board, CAB Lancashire, Parish Councils), Army, British Legion, Soldiers', Sailors' and Airmen's Families Association, Veterans Council, West Lancashire College, Edge Hill University, Help Direct Lancs

**INDEPENDENT REMUNERATION PANEL /
PARISH INDEPENDENT REMUNERATION PANEL**

Mrs G Stanley: until May 2021 (Chairman)

Mr J Boardman: until May 2020

Mr I Thompson: until May 2022

CHAMPIONS

Armed Forces: Councillor T Devine

Older People: Councillors C Cooper

Role Descriptions – Constitution 3.2 Article 2