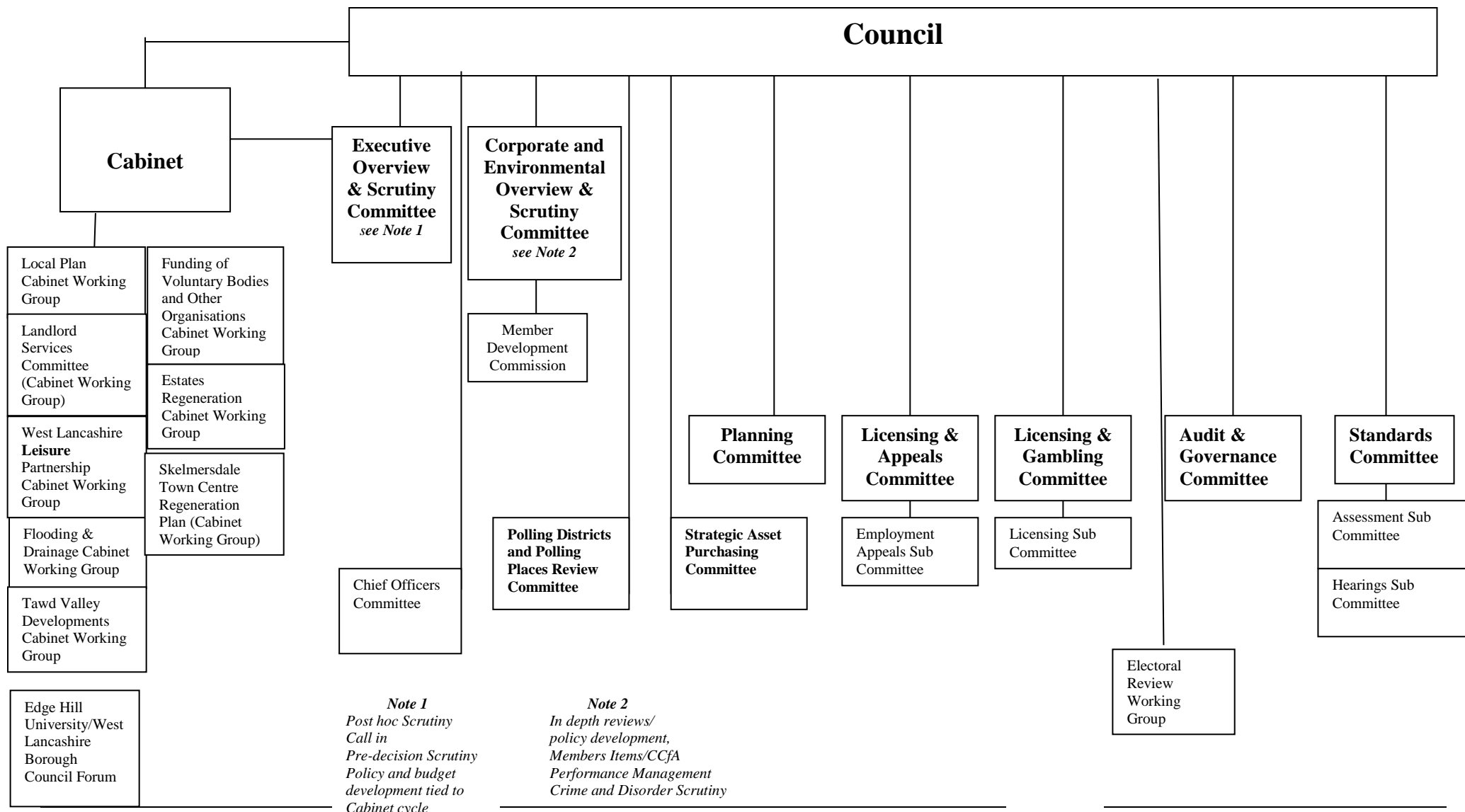


WEST LANCASHIRE BOROUGH COUNCIL – STRUCTURE MAY 2021

REVISED LABOUR APPENDIX



MEMBERSHIP OF CABINET FOR THE MUNICIPAL YEAR 2021/2022**CABINET**

Minimum 3, maximum 10, including the Leader, may not include Mayor or Deputy Mayor - Section 11(7).

Leader	Councillor	I Moran
Deputy Leader	Councillor	Y Gagen
Portfolio Holder (1)	Councillor	V Cummins
Portfolio Holder (2)	Councillor	J Wilkie
Portfolio Holder (3)	Councillor	K Wilkie
Portfolio Holder (4)	Councillor	A Yates
Portfolio Holder (5)	Councillor	D Evans
Portfolio Holder (6)	Councillor	G Dowling

The Leader has appointed the above Cabinet Members with the following Portfolios i.e. Areas of Responsibility

Leader -	Economic Regeneration
Deputy Leader -	Leisure and Human Resources
(1)	Health and Wellbeing
(2)	Housing and Landlord Services
(3)	Street Scene
(4)	Resources and Transformation
(5)	Planning
(6)	Communities and Community Safety

The Leader has appointed the Cabinet Committees and Working Groups set out below.

The Leader has also approved the Scheme of Delegation to Cabinet Members as set out in Constitution 4.3 and the Scheme of Delegation to Chief Officers insofar as they are Cabinet functions as set out in Constitution 4.2.

Leader

Dated **19 May 2021**

MEMBERSHIP OF COMMITTEES, SUB COMMITTEES, PANELS, WORKING GROUPS ETC FOR THE MUNICIPAL YEAR 2021/2022**CABINET WORKING GROUPS****1. LOCAL PLAN CABINET WORKING GROUP**

(7 Members: 4 LAB 2 CON 1 OWL)

Labour **(Chairman) Councillor D Evans**
(Vice Chairman) Councillor V Cummins

Councillors C Coughlan and S Gregson

Conservative:

OWL:

**2. FUNDING OF VOLUNTARY BODIES AND OTHER ORGANISATIONS
CABINET WORKING GROUP**

(5 Members: 5 LAB)

Labour: **(Chairman) Councillor G Dowling**
(Vice Chairman) Councillor Y Gagen

Councillors C Coughlan, S Evans and K Lockie

3. LANDLORD SERVICES COMMITTEE (CABINET WORKING GROUP)

(11 Members: 4 LAB 3 CON 4 Tenants)

Labour: **(Chairman) Councillor J Wilkie**
(Vice Chairman) Councillor N Furey

Councillors: J Finch and S Gregson

Conservative:

Tenants

Representatives: Ms. J. Killey, Ms. L. Mangan, Mr B Povey and
Vacancy

- N.B.** (i) tenant representatives have voting rights
(ii) substitutes are not allowed on the Working Group

4. ESTATES REGENERATION CABINET WORKING GROUP
(6 Members: 4 LAB 2 CON)

Labour: **(Chairman) Councillor I Moran**
(Vice Chairman) Councillor J Wilkie

Councillors S Gregson and K Wilkie

Conservative:

5. WEST LANCASHIRE LEISURE PARTNERSHIP CABINET WORKING GROUP
(8 Members: 4 LAB 2 CON 1 OWL 1 IND)

Labour: **(Chairman) Councillor I Moran**
(Vice-Chairman) Councillor Y Gagen

Councillors V Cummins and A Yates

Conservative:

OWL:

Independent: Councillor J Upjohn

6. FLOODING AND DRAINAGE CABINET WORKING GROUP
(6 Members: 3 LAB 2 CON 1 OWL)

Labour **(Chairman) Councillor A Yates**
(Vice-Chairman) Councillor G Dowling

Councillor D Evans

Conservative:

OWL:

7. COMMUNITY WEALTH BUILDING CABINET WORKING GROUP
(7 Members: 4 LAB 2 CON 1 OWL)

Labour: **(Chairman) Councillor J Finch**
(Vice-Chairman) R Cooper

Councillors S Evans and J Monaghan

Conservative:

OWL:

8. TAWD VALLEY DEVELOPMENTS CABINET WORKING GROUP
(7 Members: 4 LAB 2 CON 1 OWL)

Labour: **(Chairman) Councillor I Moran**
(Vice-Chairman) Councillor A Yates

Councillors D Evans and J Wilkie

Conservative:

OWL:

(Membership to include the Leader, Portfolio Holders for Transformation and Resources and Housing and Landlord Services).

9. SKELMERSDALE TOWN CENTRE REGENERATION PLAN CABINET WORKING GROUP
(7 Members: 4 LAB 2 CON 1 OWL)

Labour: **(Chairman) Councillor I Moran**
(Vice-Chairman) Councillor Y Gagen

Councillors S Gregson and J Wilkie

Conservative:

OWL:

COMMITTEES

1. EXECUTIVE OVERVIEW AND SCRUTINY COMMITTEE
(11 Members: 6 LAB 4 CON 1 OWL Co-optees)

Labour: **(Chairman) Councillor C Coughlan**
 (Vice-Chairman) Councillor N Furey

Councillors T Devine, S Evans, G Owen and P O'Neill

Conservative:

OWL:

The Senior Overview and Scrutiny Chairman is the Chairman of the Executive Overview and Scrutiny Committee

2. CORPORATE AND ENVIRONMENTAL OVERVIEW AND SCRUTINY COMMITTEE

(11 Members: 5 LAB 4 CON 1 OWL 1 IND Co-optees)

Labour: **(Chairman) Councillor D West**
 (Vice-Chairman) Councillor J Finch

Councillors C Dereli , A Fennell and S Gregson

Conservative:

OWL

Independent: J Upjohn

3. PLANNING COMMITTEE

(11 Members: 5 LAB 4 CON 1 OWL 1 IND)

Labour: **(Chairman) Councillor G Owen**
 (Vice-Chairman) Councillor S Evans

Councillors N Delaney, A Fennell and J Finch

Conservative:

OWL:

Independent: J Upjohn

The Portfolio Holder for Planning will not be Chairman, other portfolio holders should not normally be Chairman.

4. LICENSING AND APPEALS COMMITTEE

(11 Members: 6 LAB 4 CON 1 OWL)

Labour: **(Chairman) Councillor T Devine**
(Vice-Chairman) Councillor N Delaney

Councillors T Aldridge, K Lockie, J Monaghan and P O'Neill

Conservative:

OWL:

(Note: Membership must include at least one member of Cabinet, not to be a member of the Investigating Committee – see Sub-Committee requirements.).

5. LICENSING AND GAMBLING COMMITTEE

(15 Members: 7 LAB 6 CON 2 OWL)

Labour **(Chairman) Councillor N Delaney**
(Vice-Chairman) Councillor T Devine

Councillors T Aldridge, K Lockie, P O'Neill and D West

Conservative:

OWL:

6. STANDARDS COMMITTEE

(6 Members: 3 LAB 2 CON 1 OWL)

Chairman: Councillor I Moran (Leader of Labour Group)
Vice Chairman: Councillor D Westley (Leader of Conservative Group)

Labour: Councillors D Evans and Y Gagen

Conservative:

OWL:

Parish Councillor Representatives: Parish Councillor J Stopford
Parish Councillor L Webster
(Note term of office until May 2023)

The Chairman should be the Leader of the largest Group and the Vice Chairman should be the Leader of the second largest Group.

(Note: Independent Persons: Mr Stephen Garvey
(Appointed 17 December 2020)
Mr Mike Fawcett
(Appointed 17 December 2020)

7. INVESTIGATING COMMITTEE

(5 Members: 2 LAB 2 CON 1 OWL)

Labour: **(Chairman) Councillor J Wilkie**
(Vice-Chairman) Councillor K Wilkie

Conservative:

OWL:

Must include at least one Member of the Cabinet.

8. INDEPENDENT PANEL

Independent Person: Mr. Stephen Garvey
Independent Person: Mr Mike Fawcett
And if advice requires it 2 LAB, 1 CON, 1 OWL Members
Names to be nominated by the Group Leaders to the Legal & Democratic Services Manager

9. CHIEF OFFICERS COMMITTEE

(5 Members: 2 LAB 2 CON 1 OWL)

Labour: **(Chairman) Councillor Y Gagen**
(Vice-Chairman) Councillor I Moran

Conservative:

OWL:

Must include at least one Member of the Cabinet.

10. AUDIT AND GOVERNANCE COMMITTEE

(11 Members: 5 LAB 4 CON 2 OWL)

Labour: **(Chairman) Councillor N Furey**
(Vice-Chairman) P O'Neill

Councillors C Dereli, A Fennell and N Pryce-Roberts

Conservative:

OWL:

CIPFA Guidance - Chairman should not be a member of the Cabinet

11. CCTV IMAGES COMMITTEE

(8 Members: 4 LAB 3 CON 1 OWL)

Labour: **(Chairman) Councillor N Pryce-Roberts**
(Vice-Chairman) Councillor K Wilkie

Councillors: S Evans and D West

Conservative:

OWL:

12. POLLING DISTRICTS AND POLLING PLACES REVIEW COMMITTEE

(6 Members: 3 LAB 2 CON 1 OWL)

Labour: **(Chairman) Councillor D Evans**
(Vice-Chairman) Councillor G Dowling

Conservative:

OWL:

13. STRATEGIC ASSET PURCHASING COMMITTEE

(6 Members: 3 LAB 2 CON 1 OWL)

Labour: **(Chairman) Councillor I Moran**
(Vice-Chairman) Councillor D Evans

Councillor A Yates

Conservative:

OWL:

**LICENSING AND APPEALS COMMITTEE –
SUB-COMMITTEE**

1. EMPLOYMENT APPEALS SUB-COMMITTEE

The Sub-Committee to consist of 3 members, the membership to be determined by the Legal & Democratic Services Manager, in consultation with the Chairman of the Licensing and Appeals Committee.

(Note: For Chief Officers and Officers on JNC conditions, JNC guidance requires that Membership must include at least one member of Cabinet, not to be a member of the Investigating Committee).

**LICENSING AND GAMBLING COMMITTEE –
SUB COMMITTEE****1. LICENSING SUB COMMITTEE**

The Sub-Committee to consist of 3 members, the membership to be determined by the Legal & Democratic Services Manager, in consultation with the Chairman of the Licensing and Gambling Committee.

Either the Chairman, Vice Chairman or Opposition Spokesperson of the Licensing and Gambling Committee to act as Chairman.

STANDARDS COMMITTEE – SUB COMMITTEES**1. ASSESSMENT SUB-COMMITTEE**

The Sub-Committee to consist of 3 Members, selected by the Legal & Democratic Services Manager, in consultation with the Chairman of the Standards Committee.

2. HEARINGS SUB-COMMITTEE

The Sub-Committee to consist of a maximum of 5 Members selected by the Legal & Democratic Services Manager, in consultation with the Chairman of the Standards Committee.

3. RECRUITMENT OF INDEPENDENT MEMBERS PANEL

The Panel to consist of 3 Members selected by the Legal & Democratic Services Manager in consultation with the Chairman of the Standards Committee.

WORKING GROUP OF COUNCIL**1. ELECTORAL REIVEW WORKING GROUP**

(6 Members - 3 Lab 2 Con 1 OWL)

Labour: **(Chairman) Councillor I Moran**
(Vice-Chairman) Councillor G Dowling

Conservative:

OWL:

JOINT COMMITTEES

- POLICE AND CRIME PANEL**
(18 Elected Members (1 from West Lancashire) plus 2 independent co-opted members)

Councillor G Dowling

See Constitution 4.1 Appendices 3A – 3C .

OVERVIEW AND SCRUTINY COMMISSIONS AND WORKING GROUPS

- MEMBER DEVELOPMENT COMMISSION**
(7 Members 4 Lab 2 Con 1 OWL)

Labour: **(Chairman) Councillor C Dereli**
(Vice-Chairman) Councillor G Dowling

Councillors: Y Gagen and I Moran

Conservative:

OWL:

Additional Member/ Co-optees: To be appointed by the Commission/Committee if required

LIAISON GROUPS**PLACE-SHAPING HUB**

Lancashire County Council
Chair of Skelmersdale Place Board
Chief Operating Officer
Leader of Council
Corporate Director of Place and Community

Once proposals are being considered the following partners will be engaged as appropriate:

London & Cambridge Properties (owners of the Concourse Centre)
Homes England
West Lancashire College
Lancashire Local Economic Partnership
Tawd Valley Developments
Business Representative of Skelmersdale Place Board

FORUMS**1. EDGE HILL UNIVERSITY/WEST LANCASHIRE BOROUGH COUNCIL FORUM**

10 Forum Members – 4 Borough Councillors (3 LAB, 1 CON), 4 Board University Members, Chief Operating Officer (or her nominee), Vice-Chancellor (or his nominee)

Councillors G Dowling, I Moran and A Yates

The Member of Parliament for West Lancashire and the President of the Students Union will be invited to attend meetings of the Forum.

2. HACKNEY CARRIAGE AND PRIVATE HIRE FORUM

Membership – please refer to paragraphs 1 and 2 of the Forum's Constitution attached at 4.1 Appendix 2.

**WEST LANCASHIRE ARMED FORCES COMMUNITY COVENANT
WORKING GROUP**

(2 Members)

Labour: Councillor T Devine
Substitute: Councillor I Moran

Conservative: Councillor
Substitute: Councillor

Partners

Jobcentre Plus, North & West Lancashire Chamber of Commerce, NHS West Lancashire Clinical Commissioning Group, West Lancashire Community Leisure, Council for Voluntary Service, One West Lancashire Board, Lancashire West CAB, Parish Councils), Army, British Legion, Soldiers', Sailors' and Airmen's Families Association, Veterans Council, West Lancashire College, Edge Hill University, Help Direct Lancs

**INDEPENDENT REMUNERATION PANEL /
PARISH INDEPENDENT REMUNERATION PANEL**

Mrs G Stanley: until May 2024 (Chairman)
Mr J Boardman: until May 2023
Mr I Thompson: until May 2022

CHAMPIONS

Armed Forces: Councillor T Aldridge
Older People: Councillor N Delaney

Role Descriptions – Constitution 3.2 Article 2