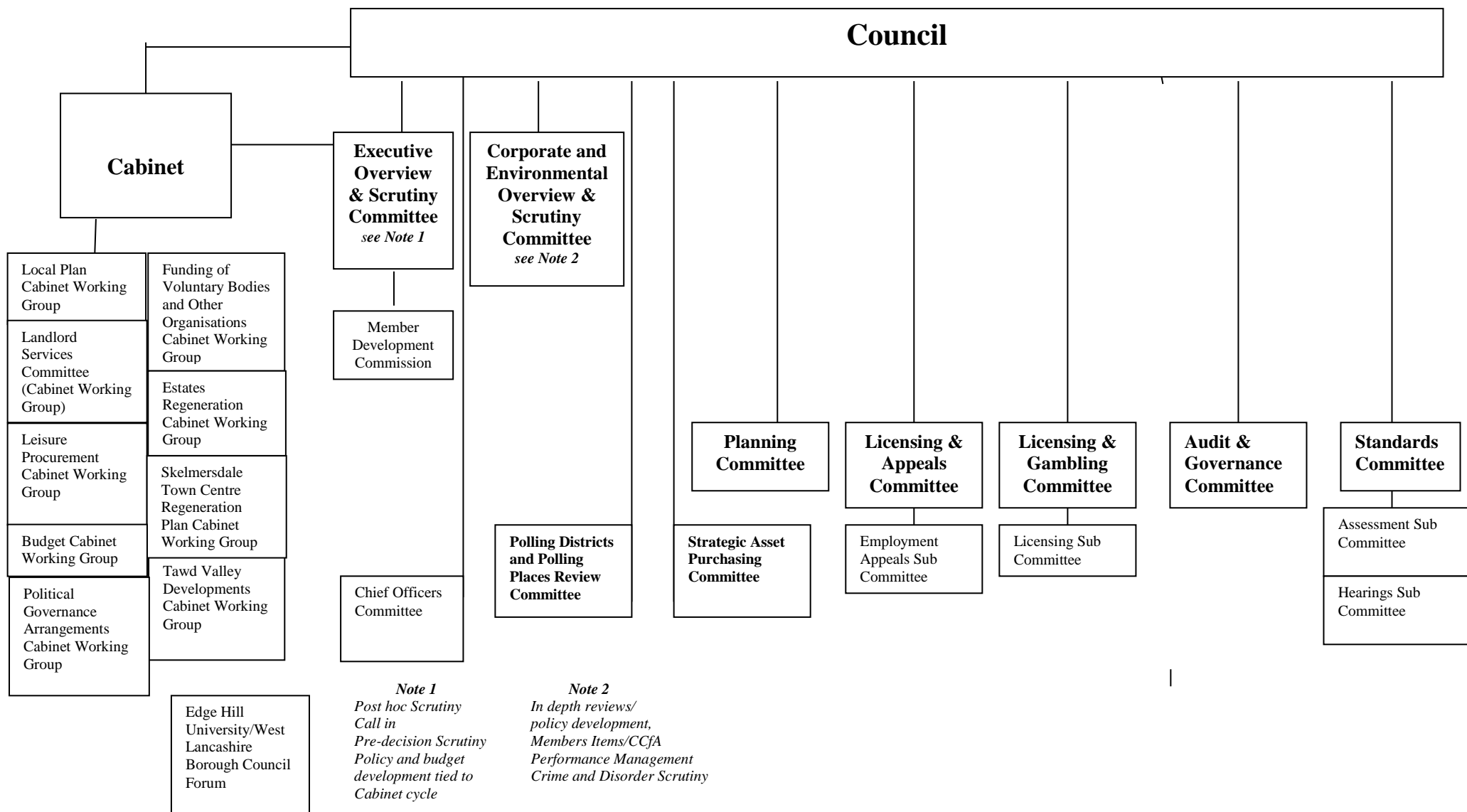


WEST LANCASHIRE BOROUGH COUNCIL – STRUCTURE MAY 2023



MEMBERSHIP OF CABINET FOR THE MUNICIPAL YEAR 2023/2024**CABINET**

Minimum 3, maximum 10, including the Leader, may not include Mayor or Deputy Mayor - Section 11(7).

	Position	Areas of Responsibility	Councillor
(1)	Leader	Legal & Democratic	Y Gagen
(2)	Deputy Leader & Portfolio Holder:	Planning & Community Safety	G Dowling
(3)	Deputy Leader (Non-Statutory) & Portfolio Holder:	Green Growth <i>(including Economic Regeneration)</i>	A Yates
(4)	Portfolio Holder:	Health & Wellbeing	V Cummins
(5)	Portfolio Holder:	Street Scene	N Furey
(6)	Portfolio Holder:	Communities	A Fennell
(7)	Portfolio Holder:	Finance	R Molloy
(8)	Portfolio Holder:	Housing	N Pryce-Roberts
(9)	Portfolio Holder:	Leisure	C Coughlan

The Leader has appointed the Cabinet Committees and Working Groups set out below.

The Leader has also approved the Scheme of Delegation to Cabinet Members as set out in Constitution 4.3 and the Scheme of Delegation to Chief Officers insofar as they are Cabinet functions as set out in Constitution 4.2.

Leader

Dated **17 May 2023**

MEMBERSHIP OF COMMITTEES, SUB COMMITTEES, PANELS, WORKING GROUPS ETC FOR THE MUNICIPAL YEAR 2023/2024**CABINET WORKING GROUPS****1. LOCAL PLAN CABINET WORKING GROUP**

(5 Members: 4 LAB 1 CON)

Chairman: Councillor G Dowling

Vice Chairman: Councillor A Fowler

Labour: Councillor A Yates

Cons: Councillors

2. FUNDING OF VOLUNTARY BODIES AND OTHER ORGANISATIONS CABINET WORKING GROUP

(4 Labour Members: 4 LAB)

Chairman: Councillor A Fennell

Vice Chairman: Councillor G Dowling

Labour: Councillors S Lawton and K Lloyd

3. LANDLORD SERVICES COMMITTEE (CABINET WORKING GROUP)

(9 Members: 5 LAB 4 CON 4 Tenants)

Chairman: Councillor N Pryce Roberts

Vice Chairman: Councillor N Furey

Labour: Councillor: A Fennell plus 2

Cons: Councillors:

Tenants

Representatives: Ms. J. Killey, Ms. L. Mangan, Mr B Povey and
Vacancy

- N.B.** (i) tenant representatives have voting rights
(ii) substitutes are not allowed on the Working Group

4. ESTATES REGENERATION CABINET WORKING GROUP

(5 Members: 3 LAB 2 CON)

Chairman: Councillor N Pryce Roberts

Vice Chairman: Councillor J Finch

Labour: Councillor Y Gagen

Cons: Councillors

5. SKELMERSDALE TOWN CENTRE REGENERATION PLAN CABINET WORKING GROUP

(7 Members: 4 LAB 3 CON)

Chairman: Councillor Y Gagen

Vice-Chairman: Councillor V Cummins

Labour: Councillors N Furey and N Pryce Roberts

Cons: Councillors

6. TAWD VALLEY DEVELOPMENTS CABINET WORKING GROUP

(5 Members: 3 LAB 2 CON)

Chairman: Councillor N Pryce Roberts

Vice-Chairman: Councillor R Molloy

Labour: Councillor A Yates

Cons: Councillors

7. LEISURE PROCUREMENT CABINET WORKING GROUP

(4 Members: 3 LAB 1 CON)

Chairman: Councillor C Coughlan

Vice-Chairman: Councillor Y Gagen

Labour: Councillor R Molloy

Cons: Councillors

8. BUDGET CABINET WORKING GROUP

(3 Cabinet Members)

Chairman: Councillor R Molloy**Vice-Chairman: Councillor A Yates**

Labour: Councillors Y Gagen

9. POLITICAL GOVERNANCE ARRANGEMENTS CABINET WORKING GROUP

(All Cabinet Members)

Chairman: Councillor A Yates**Vice-Chairman: Councillor Y Gagen**

C Coughlan, V Cummins, G Dowling, N Furey, A Fennell, R Molloy and N Pryce-Roberts

COMMITTEES**1. EXECUTIVE OVERVIEW AND SCRUTINY COMMITTEE**

(10 Members: 6 LAB 4 CON Co-optees)

Chairman Councillor J Fillis**(Vice-Chairman) Councillor T Devine**

Labour: Councillors M Anderson, P Burnside, N Hennessy and M Parlour

Cons: Councillors

The Senior Overview and Scrutiny Chairman is the Chairman of the Executive Overview and Scrutiny Committee**2. CORPORATE AND ENVIRONMENTAL OVERVIEW AND SCRUTINY COMMITTEE**

(10 Members: 6 LAB 4 CON Co-optees)

Chairman: Councillor D West**Vice-Chairman: Councillor P Hogan**

Labour: Councillors J Finch, P Hennessy, S Lawton and K Lloyd

Cons: Councillors

3. PLANNING COMMITTEE
(10 Members: 6 LAB 4 CON)

Chairman: Councillor G Owen
Vice-Chairman: Councillor A Fowler

Labour: Councillors M Anderson, A Fennell, P Hogan and S Patel

Cons: Councillors

The Portfolio Holder for Planning will not be Chairman, other portfolio holders should not normally be Chairman.

4. LICENSING AND APPEALS COMMITTEE
(13 Members: 8 LAB 4 CON 1 OWL)

Chairman: Councillor N Hennessy
Vice-Chairman: Councillor T Devine

Labour: Councillors T Aldridge, J Finch, N Furey, S Lawton, K Lloyd and S Patel

Cons: Councillors

OWL: Councillor P Hesketh

(Note: Membership must include at least one member of Cabinet, not to be a member of the Investigating Committee – see Sub-Committee requirements.).

5. LICENSING AND GAMBLING COMMITTEE
(13 Members: 8 LAB 4 CON 1 OWL)

Chairman: Councillor P Burnside
Vice-Chairman: Councillor G Owen

Labour: Councillors T Aldridge, J Fillis, A Fowler, P Hennessy, M Parlour and D West

Cons: Councillors

OWL: Councillor P Hesketh

6. STANDARDS COMMITTEE
(8 Members: 5 LAB 3 CON)

Chairman: Councillor Y Gagen (Leader of Labour Group)
Vice Chairman: Councillor D Westley (Leader of Cons Group)

Labour: Councillors P Burnside, V Cummins, A Fennell and N Furey

Cons: Councillors

Parish Councillor Representatives: Parish Councillor J Stopford
Parish Councillor L Webster
(Note term of office until May 2023)

The Chairman should be the Leader of the largest Group and the Vice Chairman should be the Leader of the second largest Group.

(Note: Independent Persons: Mr Stephen Garvey
(Appointed 17 December 2020)
Mr Mike Fawcett
(Appointed 17 December 2020)

7. INVESTIGATING COMMITTEE
(5 Members: 3 LAB 2 CON)

Chairman Councillor Y Gagen
Vice-Chairman: Councillor V Cummins

Labour: Councillor M Parlour

Cons: Councillors

Must include at least one Member of the Cabinet.

8. INDEPENDENT PANEL
(4 Members LAB CON)

Independent Person: Mr. Stephen Garvey

Independent Person: Mr Mike Fawcett

And if advice requires it LAB, CON, Members

Names to be nominated by the Group Leaders to the Legal & Democratic Services Manager

9. CHIEF OFFICERS COMMITTEE

(5 Members: 3 LAB 2 CON)

Chairman: Councillor Y Gagen

Vice-Chairman: Councillor J Fillis

Labour: Councillor A Yates

Cons: Councillors

Must include at least one Member of the Cabinet.

10. AUDIT AND GOVERNANCE COMMITTEE

(8 Members: 5 LAB 3 CON)

Chairman: Councillor M Anderson

Vice-Chairman: Councillor M Parlour

Labour: Councillors J Fillis, S Patel and D West

Cons: Councillors

CIPFA Guidance - Chairman should not be a member of the Cabinet and authorities should strive to have no more than 8 Members on the Committee)

11. POLLING DISTRICTS AND POLLING PLACES REVIEW COMMITTEE

(5 Members: 3 LAB 2 CON)

Chairman Councillor G Owen

Vice-Chairman Councillor G Dowling

Labour: Councillor A Yates

Cons: Councillors

12. STRATEGIC ASSET PURCHASING COMMITTEE

(5 Members: 3 LAB 2 CON)

Chairman: Councillor R Molloy

Vice-Chairman: Councillor A Yates

Labour: Councillor Y Gagen

Cons: Councillors

**LICENSING AND APPEALS COMMITTEE –
SUB-COMMITTEE****1. EMPLOYMENT APPEALS SUB-COMMITTEE**

The Sub-Committee to consist of 3 members, the membership to be determined by the Legal & Democratic Services Manager, in consultation with the Chairman of the Licensing and Appeals Committee.

(Note: For Chief Officers and Officers on JNC conditions, JNC guidance requires that Membership must include at least one member of Cabinet, not to be a member of the Investigating Committee).

**LICENSING AND GAMBLING COMMITTEE –
SUB COMMITTEE****1. LICENSING SUB COMMITTEE**

The Sub-Committee to consist of 3 members, the membership to be determined by the Legal & Democratic Services Manager, in consultation with the Chairman of the Licensing and Gambling Committee.

Either the Chairman, Vice Chairman or Opposition Spokespersons of the Licensing and Gambling Committee to act as Chairman.

STANDARDS COMMITTEE – SUB COMMITTEES**1. ASSESSMENT SUB-COMMITTEE**

The Sub-Committee to consist of 3 Members, selected by the Legal & Democratic Services Manager, in consultation with the Chairman of the Standards Committee.

2. HEARINGS SUB-COMMITTEE

The Sub-Committee to consist of a maximum of 5 Members selected by the Legal & Democratic Services Manager, in consultation with the Chairman of the Standards Committee.

3. RECRUITMENT OF INDEPENDENT MEMBERS PANEL

The Panel to consist of 3 Members selected by the Legal & Democratic Services Manager in consultation with the Chairman of the Standards Committee.

JOINT COMMITTEES

- 1. POLICE AND CRIME PANEL**
(18 Elected Members (1 from West Lancashire) plus 2 independent co-opted members)

Councillor G Dowling

See Constitution 4.1 Appendices 3A – 3C .

OVERVIEW AND SCRUTINY COMMISSIONS

- 1. MEMBER DEVELOPMENT COMMISSION**
(7 Members 5 Lab 2 Con)

Chairman: Councillor V Cummins

Vice-Chairman: Councillor M Parlour

Labour: Councillors J Fillis, S Lawton and K Lloyd

Cons: Councillors

Additional Member/ Co-optees: To be appointed by the Commission/Committee if required

LIAISON GROUPS**PLACE-SHAPING HUB**

Lancashire County Council
Chair of Skelmersdale Place Board
Chief Operating Officer
Leader of Council
Corporate Director of Place and Community

Once proposals are being considered the following partners will be engaged as appropriate:

London & Cambridge Properties (owners of the Concourse Centre)
Homes England
West Lancashire College
Lancashire Local Economic Partnership
Tawd Valley Developments

 Business Representative of Skelmersdale Place Board

FORUMS
1. EDGE HILL UNIVERSITY/WEST LANCASHIRE BOROUGH COUNCIL FORUM

10 Forum Members – 4 Borough Councillors (2 LAB, 2 CON), 4 Board University Members, Chief Operating Officer (or her nominee), Vice-Chancellor (or his nominee)

Labour: Councillors G Dowling and A Yates

Cons: Councillors

The Member of Parliament for West Lancashire and the President of the Students Union will be invited to attend meetings of the Forum.

2. HACKNEY CARRIAGE AND PRIVATE HIRE FORUM

Membership – please refer to paragraphs 1 and 2 of the Forum's Constitution attached at 4.1 Appendix 2.

3. FOOD INSECURITY FORUM

Membership – cross-sector

WEST LANCASHIRE ARMED FORCES COMMUNITY COVENANT WORKING GROUP

(2 Members)

Labour: Councillor P Hennessy

Substitute: Councillor T Devine

Cons: Councillor

Substitute: Councillor

Partners

Jobcentre Plus, North & West Lancashire Chamber of Commerce, NHS West Lancashire Clinical Commissioning Group, West Lancashire Community Leisure, Council for Voluntary Service, One West Lancashire Board, Lancashire West CAB, Parish Councils), Army, British Legion, Soldiers', Sailors' and Airmen's Families Association, Veterans Council, West Lancashire College, Edge Hill University, Help Direct Lancs

**INDEPENDENT REMUNERATION PANEL /
PARISH INDEPENDENT REMUNERATION PANEL**

Mrs G Stanley: until May 2024 Chairman

Mr J Boardman: until May 2026

Mr I Thompson: until May 2025

**CHAMPIONS Role Descriptions – Constitution 3.2 Article
2**

Armed Forces: Councillors P Hennessy and T Devine

Older People: Councillor T Aldridge

Youth: Councillor C Coughlan

Food Insecurity: Councillor P Hogan

Small Businesses: Councillor S Patel

Dementia: Councillor A Fennell